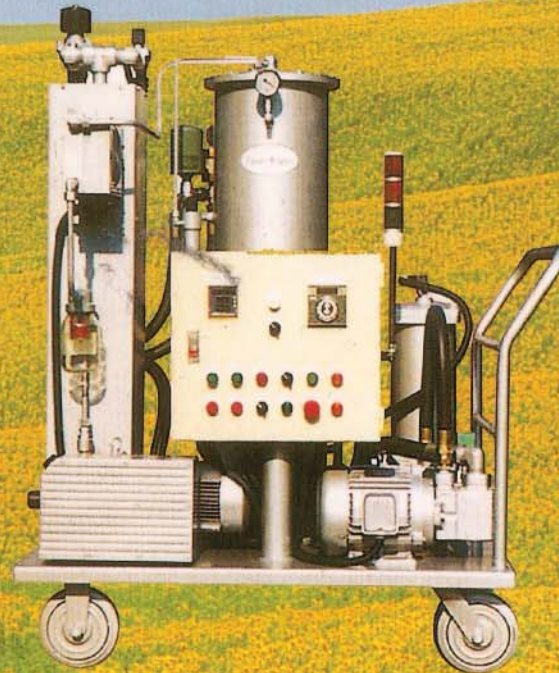


ADVANCE

Vacuum Dehydration Technology



Taisei Kogyo

WT2000 Series

油品清潔度的通用標準 **General Standards**

ISO Code

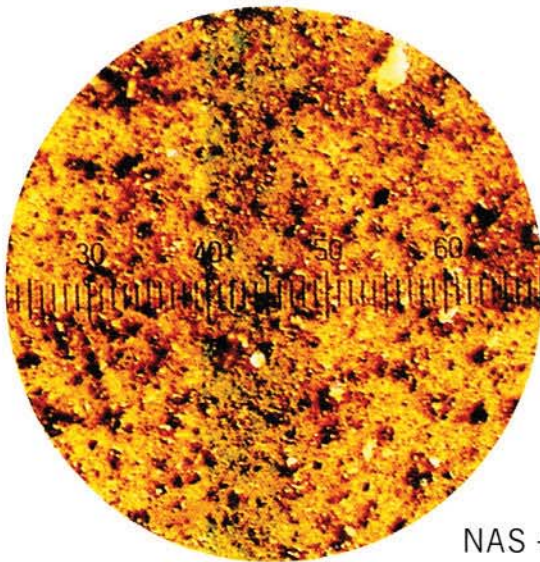
ISO 4406		
Number of particle per ml.		Range Code
greater	Smaller or equal	
80,000	160,000	23
40,000	80,000	22
20,000	40,000	21
5,000	20,000	20
2,500	10,000	19
640	5,000	18
320	1,300	17
160	640	16
80	320	15
40	160	14
20	80	12
10	40	11
5	20	10
2.5	10	9
1.3	2.5	8
.64	1.3	7
.32	.64	6

NAS Code

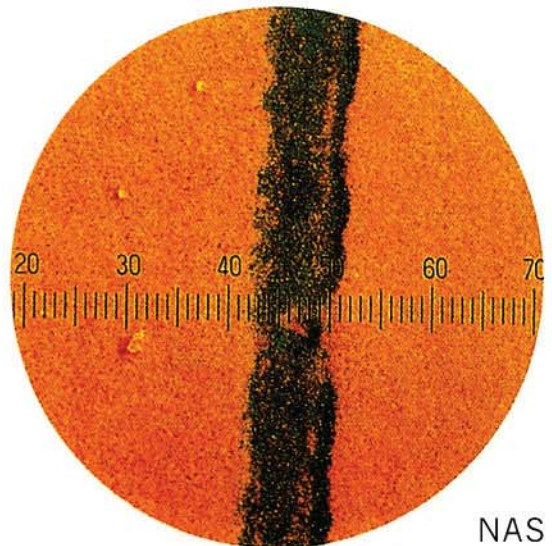
CONTAMINATION LEVEL CLASSIFICATION SYSTEM PARTICLE

NAS 1638 (COUNT LIMITS IN 100ml)

Um\Code	00	0	1	2	3	4	5	6	7	8	9	10	11	12
5-15	125	250	500	1000	2000	4000	8000	16000	32000	64000	128000	256000	512000	1024000
15-25	22	44	89	178	356	712	1425	2850	5700	11400	22800	45600	91200	182400
25-50	4	8	16	32	63	126	253	506	1012	2025	4050	8100	16200	32400
50-100	1	2	3	6	11	22	45	90	180	360	720	1440	2880	5760
> 100	0	0	1	1	2	4	8	16	32	64	128	256	512	1024



NAS +12



NAS 6

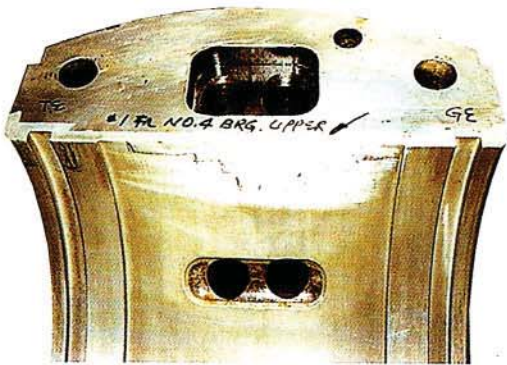
Magnification: 100x
Scale: 1 Division = 14 μm

PARTICLE COUNT SUMMARY			
PARTICLE SIZE	NUMBER PER ML. GREATER THAN SIZE	PARTICLE COUNT RANGE	RANGE CODE
5μm	31,964	20,000~40,000	22
10μm	14,400		
15μm	8,109	5,000~10,000	20
25μm	811		

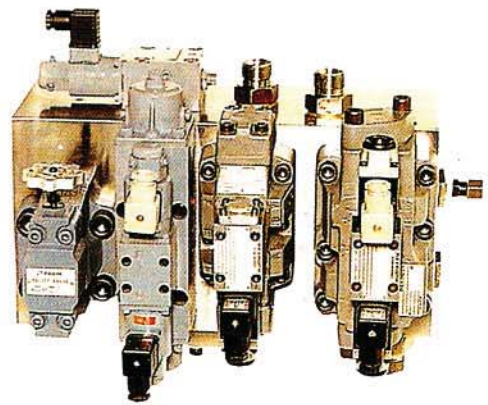
PARTICLE COUNT SUMMARY			
PARTICLE SIZE	NUMBER PER ML. GREATER THAN SIZE	PARTICLE COUNT RANGE	RANGE CODE
5μm	153	88~160	14
10μm	66		
15μm	33	20~40	12
25μm	10		

油品清潔度標準關聯表 Cleanliness Level Correlation Table

Cleanliness Level Correlation Table					
ISO Code	Particles/Milliliters			NAS 1638	SAE 749
4406	$\geq 2 \mu\text{m}$	$\geq 5 \mu\text{m}$	$\geq 15\mu\text{m}$	(1964)	(1963)
23/21/18	80,000	20,000	2,500	12	-
22/20/18	40,000	10,000	2,500	-	-
22/20/17	40,000	10,000	1,300	11	-
22/20/16	40,000	10,000	640	-	-
21/19/16	20,000	5,000	640	10	-
20/18/15	10,000	2,500	320	9	6
19/17/14	5,000	1,300	160	8	5
18/16/13	2,500	640	80	7	4
17/15/12	1,300	320	40	6	3
16/14/12	640	160	40	-	-
16/14/11	640	160	20	5	2
15/13/10	320	80	10	4	1
14/12/9	160	40	5	3	0
13/11/8	80	20	2.5	2	-
12/10/8	40	10	2.5	-	-
12/10/7	40	10	1.3	1	-
12/10/6	40	10	.64	-	-



巴式合金 Babbitt Metal



伺服及比例閥 Servo & Proportional Valve

典型液壓及潤滑系統清潔度參考指標

Typical Industrial Hydraulics & Lubrication Cleanliness Instructions

General Standards

System Component	Typical Cleanliness Instructions								
油壓系統 Hydraulic System									
Servo Valve									
Proportional Valve									
Variable Pump									
Cartridge Valve									
Fixed piston Pump									
Vane pump									
Pressure/flow control Valve									
Solenoid Valve									
潤滑系統 Lubrication Systems									
Ball Bearings									
Roller Bearings									
Journal Bearings									
Gear Box(Industrial)									
Gear Box(Mobile)									
Cleanliness level(ISO)	10/7	11/9	12/10	13/11	14/12	15/12	16/13	16/14	17/14
Cleanliness level(NAS)	1	3	4	5	6	6	7	8	8
Taisei Kogyo Filtration Media	3C								
					6M				
							8C		

鋼鐵廠

- * 中心/邊緣校正精密液壓控制
- * 連續鑄造
- * 研磨系統潤滑單元
- * 精整及調質
- * 電鍍及烤漆

STEEL MILL

-)CPC/EPC Hydraulic Control
-)C.C.M
-)Grinder Lube Systems
-)Skin Pass & Tamper Mill
-)Galvanized & Painting Sheets

發電廠

- * 渦輪機主滑油控制系統
- * 鍋爐飼水渦輪機滑油系統
- * 變壓器絕緣油
- * 煤礦廠磨煤機與輸送帶
- * 大型儲備油

POWER GENERATION

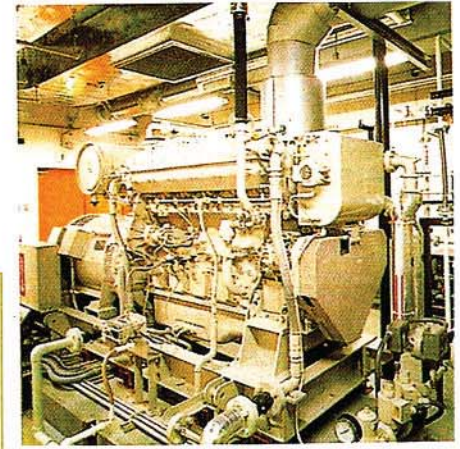
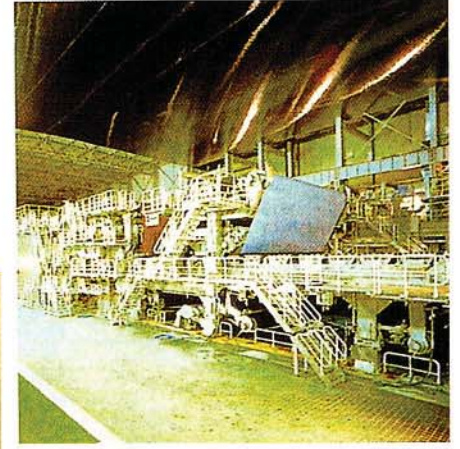
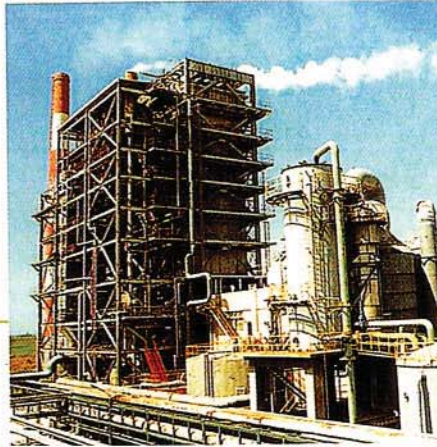
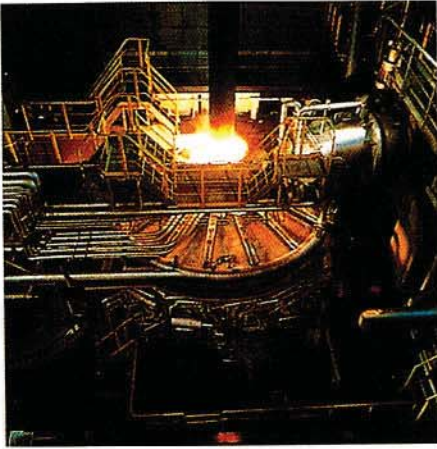
-)Main Turbine Lube Oil
-)B.F.P.T reservoirs
-)Transformer Oil
-)Coal Pulverizer/Conveyors
-)Bulk Oil Storage

紙及紙漿廠

- * 濕部液壓及潤滑系統
- * 乾部液壓及潤滑系統
- * 升降機液壓控制系統
- * 蒸氣渦輪機主滑油系統

PULP AND PAPER

-)Wet End Hydraulics & Lube
-)Dryer End Hydraulics & Lube
-)Elevators Hydraulic
-)Steam Turbine Main Lube



航太與船舶工業

- * 地勤支援系統
- * 液壓測驗平台
- * 飛行模擬單元
- * 柴油引擎潤滑系統

AIR LINE & MARINE

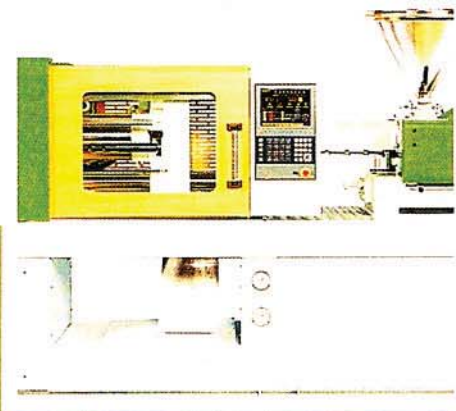
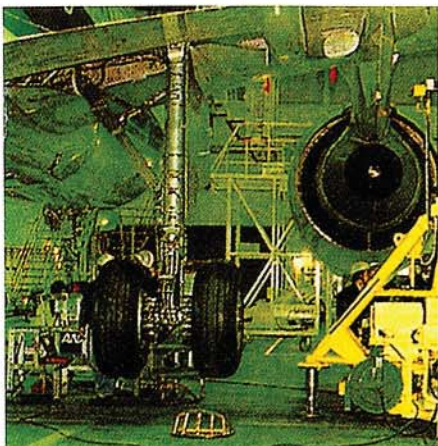
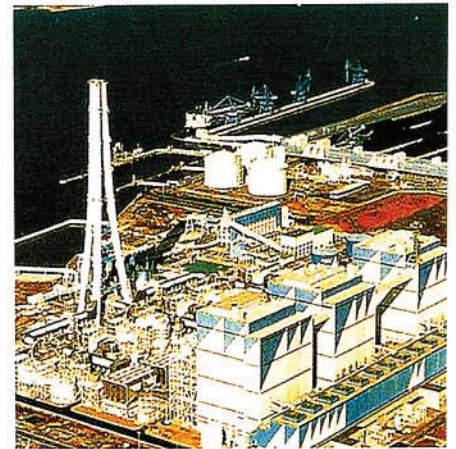
-)Ground Support System
-)Hydraulic Test Bench
-)Flight Simulator
-)Diesel Engine Lube System

石化工業與一般輕工業

- * 大型空氣壓縮機
- * 氣電共生廠
- * 吹瓶機
- * 射出成型機
- * 加工機
- * 自動化汽車工業
- * 油洗單元
- * 輪胎製造業

PETROLEUM CHEMICAL & LIGHT INDUSTRIAL

-)Bulk Oil Compressor
-)Combine Cycle
-)Blow Moulding Machine
-)Injection Moulding Machine
-)Machine Tool Hydraulic Oils
-)Automotive Transfer Line Hydraulics
-)Flushing Test Stands
-)Tires O.E.M



設備功能

可除去100%游離水及80%溶解水，100%游離空氣及80%溶解氣體。

確保系統用油品質

以高效率除污濾材 ($\beta x \geq 1000$)，確保系統用油品質。

操作與維護

控制面板顯示各項操作訊息並以PLC監控各別安全指標，機組並有手動及自動操作模式方便使用者操作及測試。

PERFORMANCE

The Taisei WT2000 Purifier can removal 100% free water and 80% of dissolved water, 100% of free air and up to 80% of dissolved air.

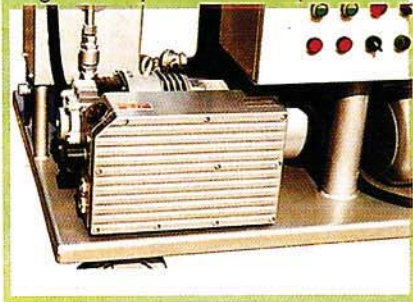
HIGH EFFICIENCY PARYICULATE FILTER

Can removal solids with an LCN filter rated at $\beta x \geq 1000$. Make sure provides clean fluid to the system.

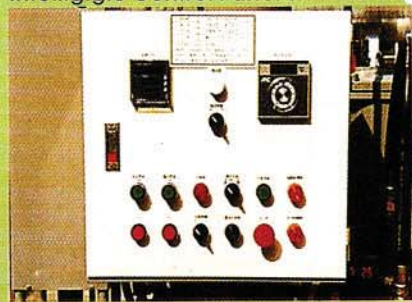
OPERATION MONITOR

The control panel displays all Alarm conditions, provide PLC and automatic & manual models for user easily to operation & test.

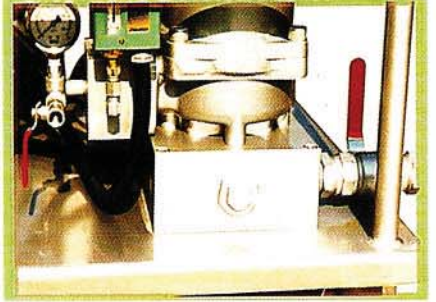
High Quality Vacuum Pump



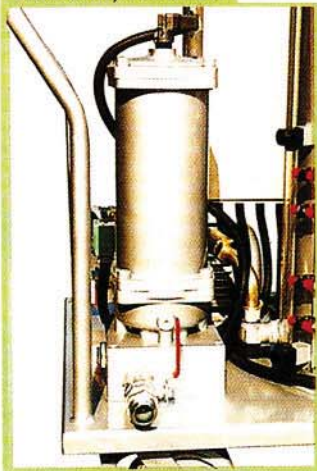
Intelligible Control Panel With P.L.C.



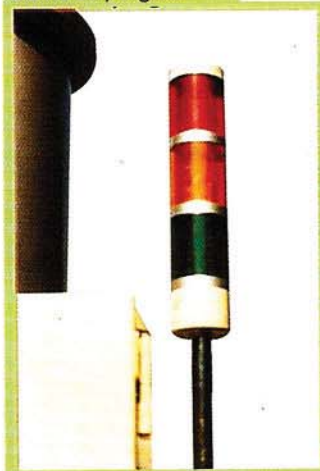
Check Valve & Pressure sensor



Efficiently Filtration



Obviously Signal



Easily moving



操作安全

設備運轉時若有液位或其他異常
訊息自動控制系統將安全停車。

機動性高

設備附滑輪機動性高，輪胎並有
充氣型式可供選擇，同時附有煞
車系統提昇設備穩定性。

操作簡便

設備只需外接電源，打開進出口
閥門後便可啓動，無需外接水或
空氣等管路。

SAFETY OPERATION

Automatic controls will safely
shut Down the machine as fluid
level or running motor is outside
normal limits.

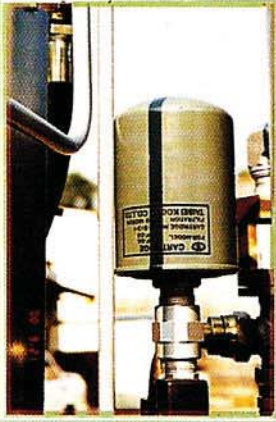
MOBILITY PORTABLE

The Wt2000 Purifier is compact
and mounted on casters providing
high Mobility. A pneumatic wheel
option and all with break system.

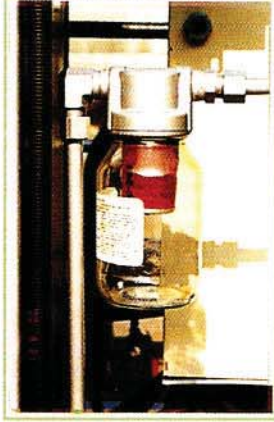
EASY AND SIMPLE OPERATION

Just supply an electrical power
and open inlet & outlet valves
then push start button, no others
water, air, connections are
necessary.

Nice Quality Air Filter



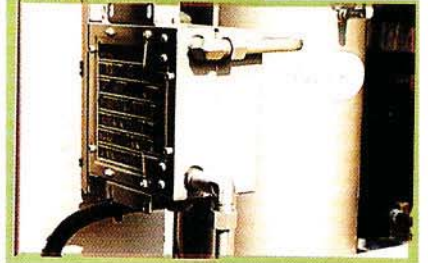
Water collect Glass bottle



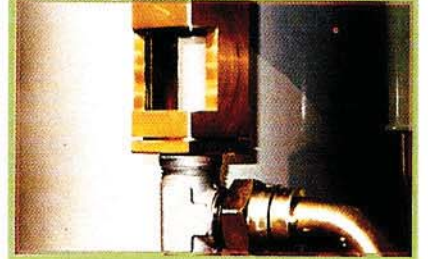
Reliable Solenoid Valves



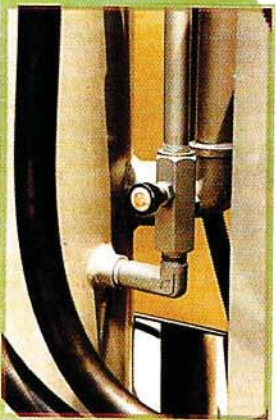
Compactly Air Condenser



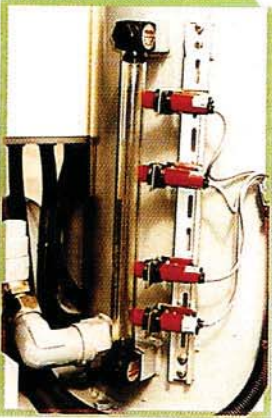
Oil Inlet Sight Glass



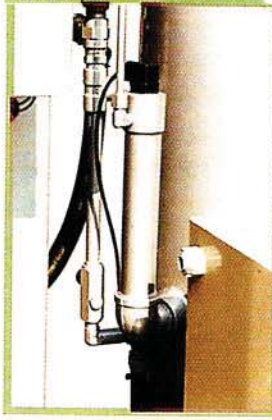
Air Inlet Orifice



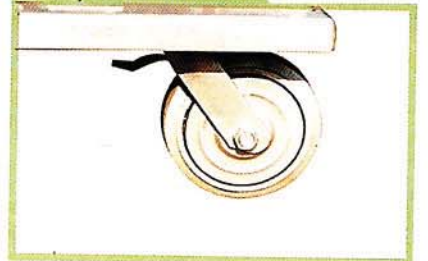
Multi-Point level switch



Double protect level switch



Mobility wheel with brake



說明

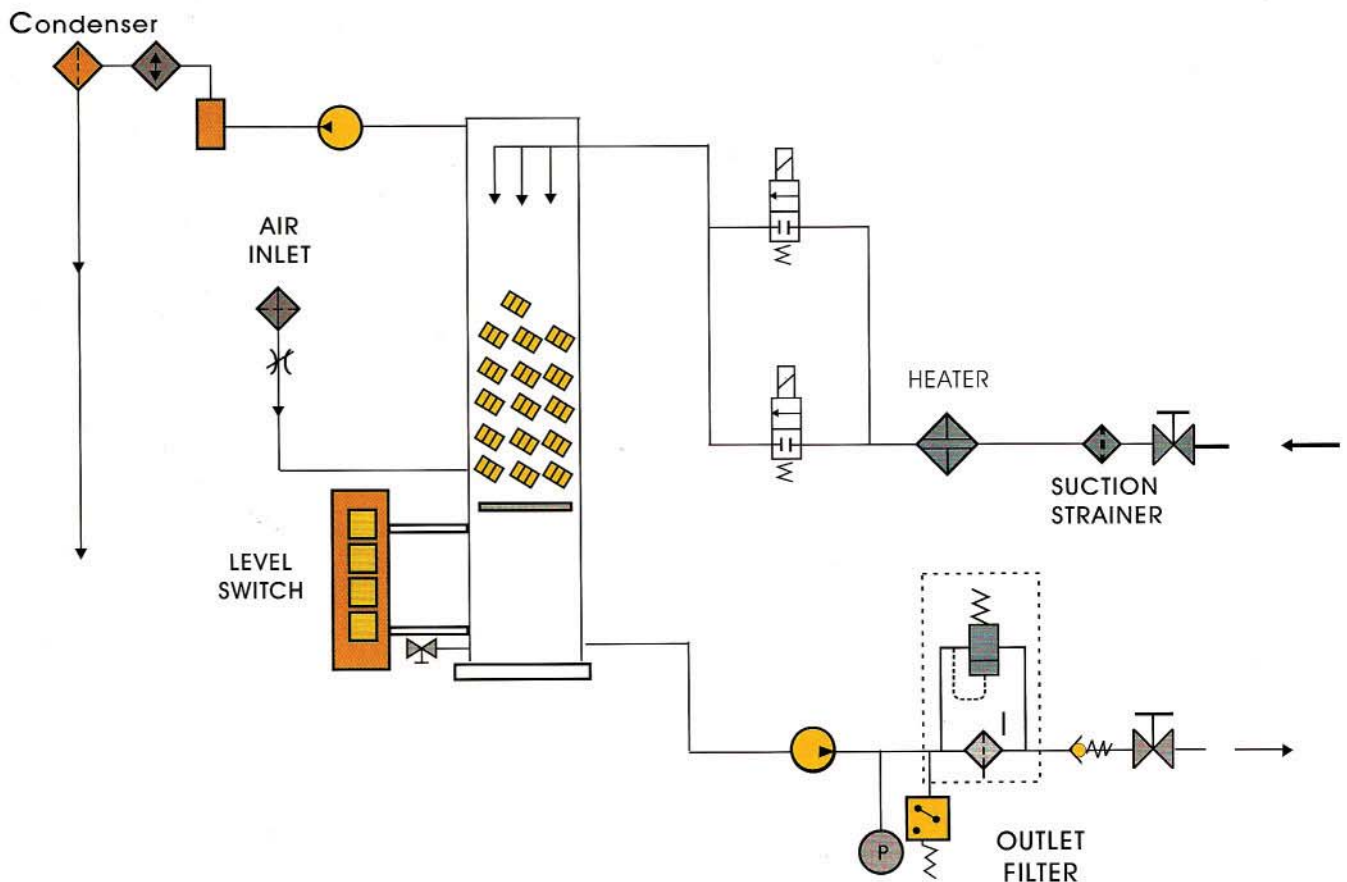
Taisei WT 2000 系統真空式淨油機是以質量交換的原理在中度真空的條件下進行油中水份及氣體的去除，設備並搭配高效率過濾器用以除去顆粒性污染。

本設備可設計為移動或固定型式，操作非常簡單，除供應3相電源外，無須外接任何水或空氣管路，啓動後可自動運轉及保養，遇有液位或其他條件異常時即可自動停機，同時有逆止閥和電磁閥來保護系統可能的回油及背壓。

The Taisei WT 2000 Vacuum type oil purifier has been employs the process of mass transfer with middle degree vacuum level to removal water ,gases. Meanwhile use highly efficient filter to removal solid particles. Taisei WT 2000 can be moved from one system to other or left as a permanent installation. Purifier has been designed simply operation, just connected to a 3p hase electrical supply, Then open the inlet and outlet valves and turned the switches to on to start the machine.

Automatic controls, integral to the unit, constantly monitor its operation and will safely shut down the system if fluid levels and pressure is outside normal limits. A solenoid valve on the inlet and check valve on the outlet prevents fluid draining back into the tower from a reservoir with a positive head.

參考流程圖 Flow Schematic



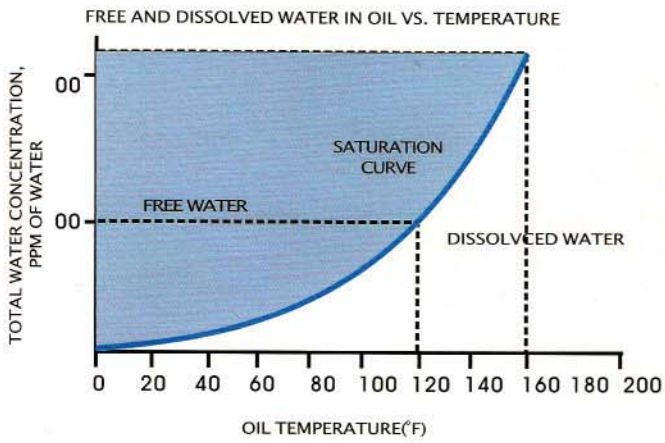
訂購指南 Ordering Information

請依實際需要的條件，選項並填入適當欄位

Please select the desired symbol to construct a model code

WT 2000		CODE 1	CODE 2	CODE 3	CODE 4	CODE 5
CODE 1 設備流量 Flow Rate	代號 Symbol	需要條件 Description				
	2K15	15 lpm				
	2K30	30 lpm				
	2K60	60 lpm				
	2K80	80 lpm				
	2K150	150 lpm				
CODE 2 止洩材料 Seals	B	Buna				
	V	Viton				
CODE 3 電源規格 Power Supply	220	3P 50/60 HZ				
	380	3P 50/60 HZ				
	460	3P 50/60 HZ				
CODE 4 濾心介質 Element Media	3C	3 \geq 200 (ISO 4572)(1000 ISO16889)				
	6M	6 \geq 200 (ISO 4572)(1000 ISO16889)				
	8C	8 \geq 200 (ISO 4572)(1000 ISO16889)				
	10U	10um Nominal Rating(Cellulose Paper)				
	20U	20um Nominal Rating(Cellulose Paper)				
	50UW	50um Nominal Rating(Metal Wire)				
CODE 5 流體黏度 Fluid Viscosity	L	below 68 cSt				
	M	69~460 cSt				
	H	461~700 cSt				

其他特殊需求，請與我們聯絡 Please contact with us,if you have special requirements.



Ref: EPRI CS-4555 (Typical turbine oil)

To minimize the harmful effect of free water (formed at lower system temperatures, water concentration in oil should be kept as far below the oil saturation point as possible.

